

Walton EMC Grants \$290,065 to Local Schools

Most schools and teachers always face a nagging problem – not enough funding to provide the programs and materials they need to enhance instructional programs for their students.

Walton EMC found a way to help with its School EmPOWERment Grant program. The cooperative just delivered another round of checks totaling \$290,065 to public and private schools all across its 10-county service area.

The money comes from unclaimed refunds. After exhausting all attempts to find the rightful owners, Georgia law allows the money to be used for education and other community improvements.

This year's grants bring the all-time total awarded to almost \$1.7 million.

FAST FACTS

\$290,065
total distribution

\$4,329
average grant

67
number of
grants

53
schools receiving grants

\$1,691,875
total since beginning
of program

To see
the complete
list of 2020
grants, log on to
waltonemc.com.



The latest donations administered by Walton Electric Trust

Bethel Haven, Inc. – \$5,000 for emergency counseling assistance for those dealing with issues brought on by COVID-19. *Barrow, Clarke, Greene, Gwinnett, Oconee, Walton*

Developmental Disabilities Ministries, Inc. – \$10,000 to update their Appalachian Home that provides residential support to people with disabilities. *DeKalb, Gwinnett, Oconee*

Hi-Hope Service Center – \$10,000 for their prescription medication program that serves adults with intellectual and developmental disabilities. *Gwinnett*

Mending the Gap – \$10,000 for their Save Our Seniors, Be a Friend and Connect2Connect programs for low-income and vulnerable seniors. *Gwinnett, Walton*

Presbyterian Homes of Georgia – \$3,627.11 to purchase activities equipment for their senior adult ministries. *Oconee*

Reboot Jackson – \$5,000 for their transportation and peer engagement programs that support those facing substance abuse and mental health challenges. *Barrow, Clarke, Gwinnett, Oconee, Walton*

One Family – \$802.50 for emergency assistance.

Eagle Ranch, Hope Clinic, Judy House Ministry, Lawrenceville Cooperative Ministry – \$42,000 for these agencies that provide emergency food, shelter and medical needs. These funds come from unclaimed capital credits.

WANT TO HELP?

Go to the "Community" tab at **waltonemc.com** and click on the Operation Round Up link. Every customer-owner's donation helps those in need. Walton EMC covers all administrative costs of the program.

Walton EMC
Customer-Owned Electric Power

realite

Can **TEXAS** Happen Here?

WHEN IT COMES TO THE ELECTRICAL GRID, WE'RE MUCH DIFFERENT THAN THE LONE STAR STATE

Is it possible for Georgia's power grid to find itself in an icy grip like Texas just experienced? (Spoiler alert: It's very unlikely, say the three companies that play a major part in generating and delivering your power.)

Oglethorpe Power Corporation (OPC), Georgia Transmission Corporation (GTC) and Georgia System Operations Corporation (GSOC), jointly known as the Family of Companies (FOC), just issued a fact sheet discussing Georgia's electric grid in light of the recent crisis in Texas.

The FOC is jointly owned by 38 of Georgia's 41 EMCs – including Walton EMC – to generate, transmit and balance the energy supply on their behalf.

When it comes to the electrical grid and electricity market, we're much different than the Lone Star State. Here are the highlights of the FOC fact sheet:

PLANNING

- The storm system that hit Texas was much worse than the state's grid operator's planning had envisioned ever happening.
- GSOC sets an amount of power generation in reserve each year. This projection includes a forecast of the peak load plus additional reserve capacity. All EMCs review this reserve requirement to ensure it is large enough.

—continued inside

TEXAS

APR '21

- > walton emc crews help kentucky
- > where does my electricity come from
- > safe digging month
- > walton emc grants
- > operation round up

Walton EMC
waltonemc.com

REALITE **APR 2021** VOLUME 71, NO. 4

quick guide

IF YOUR POWER IS OUT

770.267.2505

waltonemc.com > Report an Outage

WHEN WE'RE AVAILABLE

Power Outages and Emergencies > 24/7

Contact Center > M–F, 7A–7P

Business Offices > M–F, 8A–5P

find us

Monroe 842 US Hwy. 78

Snellville 3645 Lenora Church Rd.

Watkinsville 2061-D Hog Mountain Rd.

Web waltonemc.com

Facebook facebook.com/waltonemc

Twitter twitter.com/waltonemc

Youtube youtube.com/emctv

our leaders

CEO Ronnie Lee

COO Ron Marshall

Senior VP Corporate Services Russell DeLong

Senior VP Power Supply Robert Rentfrow

CFO/Senior VP Finance Marsha Shumate

VP Walton Energy and External Affairs
Jim Bottone

VP of Engineering and Operations
Tim Morris

Board Chair Dawn Taylor

Board Vice Chair Michael Lowder

Board Secretary/Treasurer Dan Chelko

Board Members Tommy Adcock, Billy Ray Allen, Johnny Allgood, Jason Sidwell, Sam Simonton, Jim Whitley

Community and Public Relations Director
Greg Brooks, MCC

Communications Coordinator
Savannah Chandler, MCC

Design mPrint Design Studio

walton gas

NEED NATURAL GAS SERVICE?

770.GAS.HEAT or waltongas.com

emc security

NEED SECURITY SERVICE?

770.963.0305 or emcsecurity.com

©2021 Walton EMC is a customer-owned power company. That means our cooperative focuses on service, not profit. We serve more than 133,000 accounts in Athens-Clarke, Barrow, DeKalb, Greene, Gwinnett, Morgan, Newton, Oconee, Rockdale and Walton Counties.

Our subsidiaries supply natural gas and security services.

Can **TEXAS** Happen Here?

—continued from front

INTERCONNECTION BETWEEN POWER GRIDS

There are two main power grids in the United States: the Eastern Interconnection and the Western Interconnection. But most of Texas has its own power grid.

- The Texas grid is independent from the rest of the United States, making it an “island.” Texas has limited interconnectivity with the rest of the U.S. to get aid if the electricity generation inside the state is unable to meet demand.
- Georgia’s electricity grid is interconnected with the rest of the Southeast, having strong interconnections with neighboring utilities from Florida, Alabama, Tennessee, the Carolinas and beyond. This mutual support is maintained through planning and communications.

- The FOC has long-term agreements with these neighboring utilities to support each other when the power grid is stressed.

ENERGY MARKETS

- Texas is organized as a deregulated “energy-only” market. Power producers only get paid for power they actually generate and send to the grid. That means they are not paid for unused plants that would normally be on standby to provide a reserve for emergencies.
- Georgia’s utilities are more traditionally regulated. They receive incentives to invest in reliable long-term generating capacity. The current anticipated power reserves in our region are currently at 27 percent for summer and 32 percent for winter.

WINTERIZATION

- OPC power plants are built and designed to operate in extreme winter weather.

- After the 2014 Polar Vortex, OPC improved the design of its power plants and then carried out projects to safeguard against subzero temperatures.

DIVERSE RESOURCES

- OPC utilizes a diverse fuel mix to power its plants including nuclear, coal, hydro and natural gas. In an emergency, some of the natural gas plants can switch to fuel oil.
- Georgia’s natural gas supply is diversified. We can get natural gas from the Gulf of Mexico or gas fields of the upper states.
- OPC owns a significant share of Georgia’s nuclear plants, a base load resource that will last 60 to 80 years, if not longer.

You can bet that what happened to the electric system in Texas will be reviewed, analyzed, studied and critiqued by countless experts and organizations. Maybe in the end, they will look to Georgia’s robust electric grid as one to emulate.

LINEMAN
APPRECIATION
DAY IS
APRIL 18.

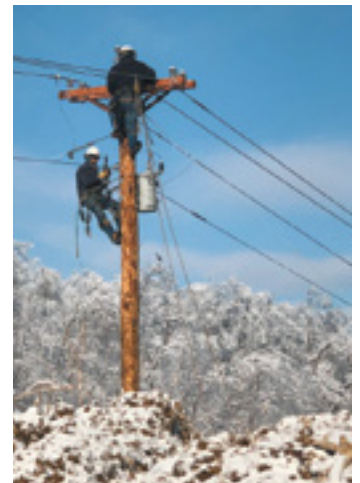
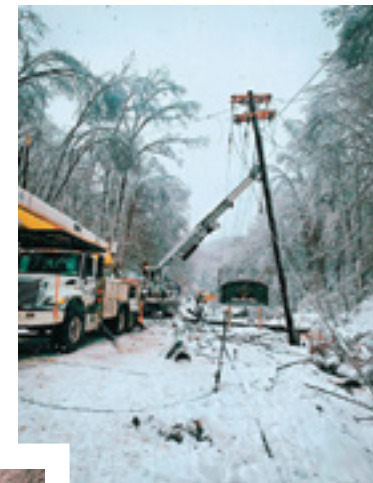
WEMC Crews Help in Kentucky Ice Storms Aftermath

Several crews from your co-op made the trip to Northwest Kentucky during February and March to help Grayson Rural Electric Cooperative Corporation after back-to-back winter storms covered the area in ice.

Most of Grayson’s 15,000 customer-owners lost power, and it took 20 days for a complete restoration. Besides the ice, frigid working conditions, slick roads and difficult terrain made the job even harder.

After almost two weeks, a second wave of crews relieved those first on the scene. Walton EMC has a long history of sending and receiving help from other cooperatives during large outages.

Walton EMC employees assisting Grayson RECC are: Matt Britt, Brandon Brooks, Jonathan Brooks, Chae Cherry, Luke Davis, Eric Ellington, Reed Gogan, Dalton Lingold, Ben Powell, Jared Smith, John Spence, Caleb Tallant, Robert Walters and Jason Wright.



Where does my electricity come from?

The electricity Walton EMC distributes to members’ homes and businesses is generated from a variety of sources.

16%

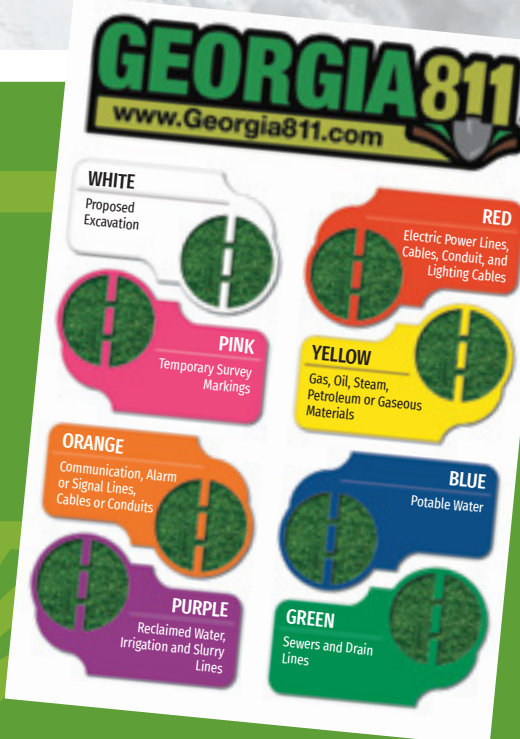
is made by COAL-fired steam plants, like the Wansley Power Plant in Heard County.

April is Safe Digging Month

Spring is full of color. If you’re planning to dig, make sure some of those colors are utility markings.

By making a simple call to 811, you can avoid serious and expensive problems when you dig.

For more information, check out georgia811.com.



Photos by
Brandon Brooks,
Ben Powell,
Robert Walters