

Merry and Bright: Christmas on Dixie

'Tis the season for "light looking" – that long-held, holiday pastime when families drive around to view houses and businesses decorated with Christmas lights, lawn ornaments and dazzling displays of holiday cheer. Last year, the Merry and Bright social media poll conducted by Walton EMC revealed there's no shortage of local places to get your holiday light fix.

Top vote getter as the best and brightest was Christmas on Dixie in Madison. Neighbors Shane Seabolt and Sandy McCurley, along with their families, are the masterminds behind the holiday spectacle that features thousands of twinkling lights, 150 holiday-themed inflatables and numerous lighted, wooden displays crafted by Sandy and her late mother.

Begun in 2013, the yard display now encompasses a two-acre lot. It takes about four weeks of work to set up the display. On Thanksgiving evening, the Seabolt and McCurley families gather for an official "grand lighting" to begin another season of welcoming guests.

Visitors are invited to park and wander through the display for an up-close view while holiday tunes play. Visits with Santa, face painting, hot chocolate and more are also offered on select evenings.

Both young and old can find something to enjoy, said Sandy, recalling a 90-year-old woman who came to see Santa. "It was the first time she had ever sat in Santa's lap, so that was a big night for her," she said.

The neighbors said their own experiences of driving with family to look at holiday displays inspired them to create Christmas on Dixie. "When I was a kid, my granddaddy would take the whole family every year," said Shane. "Those are some childhood memories that I won't forget."

Christmas on Dixie is now open and free to see. Create some holiday memories by loading up the family and heading out to take a look at this sparkling, twinkling display.

CHRISTMAS ON DIXIE

WHERE: 2300 Dixie Hwy. (corner of Dixie Hwy. and Wilson Rd.), Madison

WHEN: Through Dec. 31

BEFORE YOU GO: Visit the Christmas on Dixie Facebook page to check hours and schedule of activities.

Check out Walton EMC's Facebook page to learn the results of the 2019 Merry and Bright holiday lighting poll.

Neighbors Sandy McCurley, left, and Shane Seabolt, along with their families, begin months in advance preparing for thousands of guests who enjoy their annual Christmas on Dixie light display.

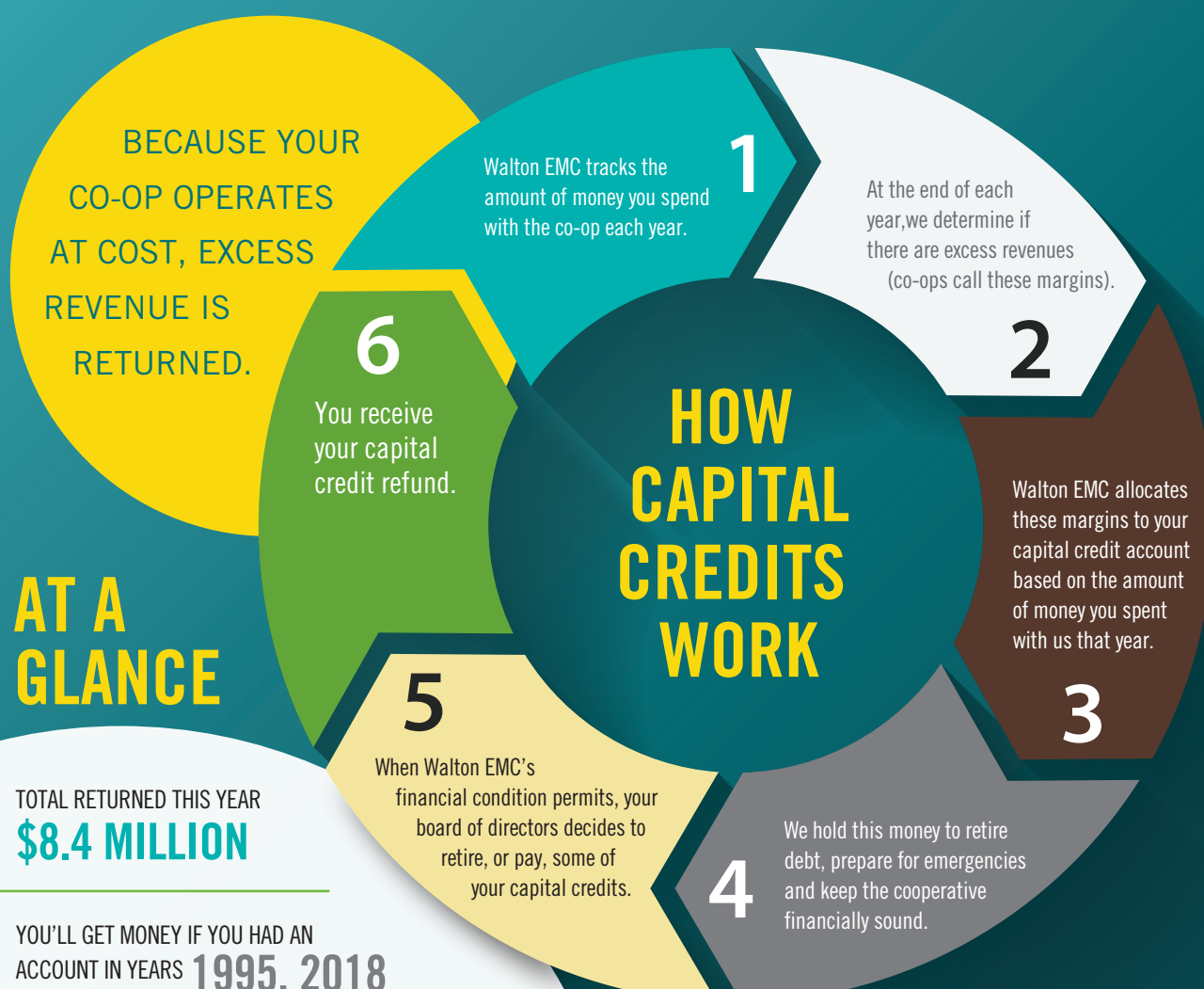


THE *Rundown* }

inside: space heater guide, walton electric trust scholarship
on the back: christmas on dixie

\$8.4 MILLION COMING BACK!

MOST CUSTOMER-OWNERS GETTING A REFUND THIS MONTH



AT A GLANCE

TOTAL RETURNED THIS YEAR
\$8.4 MILLION

YOU'LL GET MONEY IF YOU HAD AN ACCOUNT IN YEARS **1995, 2018**

WHEN: **EARLY DECEMBER THROUGH EARLY JANUARY**

HOW: **BILL CREDIT** LESS THAN \$500
OR **CHECK** \$500 OR MORE

ALL-TIME TOTAL REFUNDED
\$108 MILLION

QUICK GUIDE

IF YOUR POWER IS OUT
770.267.2505
waltonemc.com > Report an Outage

FIND US
Phone 770.267.2505
In person Monroe – 842 US Hwy. 78
Snellville – 3645 Lenora Church Rd.
Watkinsville – 2061-D Hog Mountain Rd.
Web waltonemc.com
Facebook facebook.com/waltonemc
YouTube youtube.com/emctv

WHEN WE'RE AVAILABLE
Power Outages and Emergencies > 24/7
Contact Center > M-F, 7A-7P
Business Offices > M-F, 8A-5P

EMC LEADERS
CEO Ronnie Lee
Sr. VP Corporate Services Russell DeLong

Sr. VP Engineering & Operations Ron Marshall
Sr. VP Power Supply Robert Rentfrow
Sr. VP Finance Marsha Shumate
VP Walton Energy & External Affairs Jim Bottone
Board Chair Sam Simonton
Board Vice Chair Dawn Taylor
Board Sec./Treas. Dan Chelko
Board Members Tommy Adcock, Billy Ray Allen, Johnny Allgood, Michael Lowder, Jason Sidwell, Jim Whitley

Community and Public Relations Director Greg Brooks, MCC
Communications Coordinator Savannah Chandler, MCC
Design by mPrint Design Studio

NEED NATURAL GAS SERVICE?
770.GAS.HEAT > waltongas.com

NEED SECURITY SERVICE?
770.963.0305 > emcsecurity.com

©2019. Walton EMC is a customer-owned power company. That means our cooperative focuses on service, not profit. We serve more than 130,000 accounts in Athens-Clarke, Barrow, DeKalb, Greene, Gwinnett, Morgan, Newton, Oconee, Rockdale and Walton Counties. Our subsidiaries supply natural gas and security services.

WALTON EMC'S SPACE HEATER GUIDE

Need a little extra heat in one or two spots? Then consider an electric space heater.

"Electric space heaters are great for spot heating," says WEMC's Greg Brooks. "Just try to use them sparingly for short periods in just the room you're occupying."

Brooks continues, "Electric models have many advantages over LP gas or kerosene space heaters. Most of all, they're much safer."

That's because electric space heaters don't use flames, dangerous fuels or produce carbon monoxide (CO). Manufacturers may recommend opening a window when using fossil fuel space heaters to avoid CO poisoning.



HALOGEN RADIANT

MORE ELECTRIC ADVANTAGES

Electric space heaters cost quite a bit less to buy than other types of space heaters. There's no gas piping or installation charges, either.

Since they're portable, you're not stuck with having to use the space heater in just one place or buying additional heaters for different rooms.

SURPRISE!

Although space heaters are good for their intended task, they're not designed to heat

a whole house or large area. Many consumers are surprised at next month's electric bill after running three or four space heaters.

"You can probably run a heat pump and heat an entire home for less per hour than it costs to heat just one room with a space heater," says Brooks. "Use the central system to heat your house and buy a space heater for things like working in the garage."

For example, running just one space heater at the 1,500-watt setting for twelve hours costs approximately \$1.25 on Walton EMC's winter rate. For one month, that turns into \$37.50. If you run three heaters, that brings the grand total to \$112.50.

SPACE HEATER SAFETY

Follow these basic space heater safety rules:

- Buy only Underwriter's Laboratory (UL) approved heaters.
- Avoid using extension cords with space heaters. If you must use an extension cord, make sure the wire size is heavy enough to handle the amperage requirements of your heater (you can figure this by dividing the heater wattage by 120). Never use lamp-type extension cords with a space heater.
- If the wiring or outlets in your home are old, consider a lower or variable wattage heater instead of 1,500-watt models.



OIL-FILLED CONVECTION

- Buy heaters with safety switches that turn the heater off if it's tipped over.
- Make sure the heater you buy has a protective grill in front of the elements. Don't remove it. (Some oil-filled heaters don't get hot enough to require a grill.)
- Keep all materials at least three feet from space heaters.
- Never use a space heater while it's unattended or you're sleeping. Use extra caution around children.
- Make sure the heater rests on a stable surface.

CHOOSING A SPACE HEATER

When choosing a space heater, consider how and where it will be used. There are three main types of space heaters:

Radiant – These heaters warm the people and objects in front of them rather than the air in the room, so your body will feel warmer quicker. Choose a radiant heater if you'll be staying mostly in one place, like on the couch watching TV or at a workbench in the garage. They're good for spot heating in areas that aren't normally heated.

Natural Convection – Convection heaters work by using natural currents of warm air. Choose both natural or fan-forced convection heaters if there are several people in different places in the room,



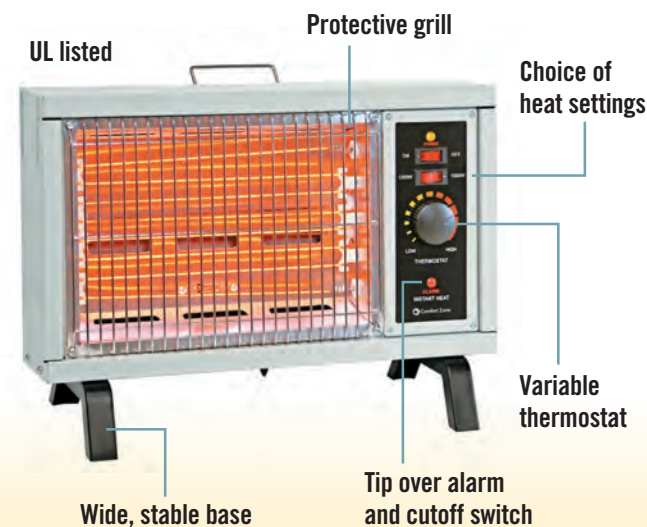
FAN-FORCED CONVECTION

if you're moving around the room or if you want to heat the entire room. Oil-filled convection heaters are probably the safest space heaters of all, but they're also the slowest to warm the space they're heating.

Fan-forced Convection – These use the same principle as natural convection heaters but with a fan to assist natural air currents. They're the quickest for heating an entire room and probably the least expensive to buy. On the downside, the area right in front of the heater may be somewhat warmer than the rest of the room. The heater's fan may also make the room feel drafty.

Don't be fooled by claims that one space heater is more efficient than another. They're basically all the same efficiency.

LOOK FOR THESE MINIMUM FEATURES WHEN BUYING A SPACE HEATER:



DEADLINE JANUARY 31

Walton Electric Trust Scholarship

BASIC QUALIFICATIONS:

- High school senior or incoming college freshman
- 21 years old or younger
- Your home served by Walton EMC (electricity)
- Scholarship used at accredited college, university or vo-tech school
- Complete criteria, rules and instructions on the application

WE'RE LOOKING FOR:

- Community involvement
- Strong work ethic
- Success in extracurricular activities
- Triumph over obstacles and hardships



Q: Where does the money for these scholarships come from?

A: From unclaimed capital credit refunds. After all attempts to find the owners are exhausted, the money goes into a fund provided for by Georgia law. No Operation Round Up donations are used for scholarships.

Get the application at waltonemc.com



SPECIAL OFFER! Get 10 percent off on a Comfort Zone oil-filled radiator heater! Use the code WaltonEMC10 when you order at http://bit.ly/wemc_heater

Photos courtesy Comfort Zone. comfortzoneproducts.com



SEASON'S GREETINGS

Wishing you a Merry Christmas, Happy Hanukkah and Happy New Year, from all of us at Walton EMC. Our offices will be closed Dec. 24, 25 and Jan. 1 in celebration of the holidays. As always, call us 24/365 for outages.

