

operation round up

Operation Round Up Grants to Community

\$94,000

With almost half of the cooperative's customer-owners participating, we've given well over \$5 million that stayed within the 10 counties we serve. Every penny of that \$5 million went to help those in need. All administrative costs of Operation Round Up are paid by Walton EMC.

Here are the latest grants from your contributions to Walton EMC's Operation Round Up:

Area Churches Serving Together – \$10,000 Emergency food, shelter and medical needs. *Oconee.*

Bethany Christian Services of Georgia – \$5,000 Recruitment program seeking foster and foster-to-adopt families. *Entire Walton EMC territory.*

Butterfly Dreams Farm – \$6,500 Therapeutic riding program for special needs children and adults. *Barrow, Clarke, Gwinnett, Morgan and Oconee.*

CHRIS 180 – \$10,000 Safety, counseling and support for abused and neglected children in foster care through JourneyZ Group Homes. *DeKalb, Gwinnett and Rockdale.*

Georgia Children's Chorus – \$8,000 Participation scholarships for children who would not otherwise be able to participate. *Barrow, Clarke, Morgan, Oconee and Walton.*

Gwinnett Citizen Fire Academy – \$10,000 Smoke Alarm Blitz to check batteries and replace broken smoke alarms. *Gwinnett.*

Nuçi Phillips Memorial Foundation – \$2,000 Camp Amped that seeks to prevent suicide in middle and high school students. *Clarke, Gwinnett, Morgan and Oconee.*

Prevent Child Abuse Rockdale – \$2,500 Newton Positive Parenting project. *Newton and Rockdale.*

Rotary Club of Oconee County – \$10,000 Ramps for handicapped who can't afford them. *Oconee.*

Special Olympics of Georgia – \$1,500 Support for Special Olympics Games. *Barrow, Clarke, DeKalb, Greene, Gwinnett, Newton, Oconee, Rockdale and Walton.*

St. Oliver Plunkett-St. Vincent de Paul – \$5,000 Back to school packs and Lunch Break. *Gwinnett and Walton.*

Variety – \$6,000 Mobility bikes for disabled and disadvantaged children. *DeKalb and Gwinnett.*

Walnut Grove Public Library – \$8,000 Library materials. *Gwinnett, Newton, Rockdale and Walton.*

Five families – \$9,891.19 Emergency assistance.

WANT TO PARTICIPATE IN OPERATION ROUND UP?

Go to the "Community" tab at waltonemc.com and click on the Operation Round Up link. Do it today!

where are you? Unclaimed Refunds

Take a look at these Walton EMC customer-owners who discontinued service. We mailed refunds of deposits and/or membership fees, but the Post Office returned them.

If you know someone on this list, please have them contact us at 770-266-2519.

Barfield, Ruth R.; Beenaked Wax Co., LLC; Black, Zula; Branscum, William; Bridges, Joseph C.; Colfin AI-GA1, LLC; Creer-Collins, Amy G.; Delarosa, Jr., Ruben; Flynn, Billy; Gardner, Jamie; Gebrezigabher, Tewolde B.; Griffin, Debra D.; Hernandez, Juan M.; Hicks, Sharon Y.; High Performance Physical, LLC; Hubbard, Brian H.; Kilburg, Rustin; Lang Enterprises; Liberty Tax; Lopez, Alma; Manna Property Management; Matthews, Reinna; Morocco, Rick; Nash, Dylan M.; Smith, Jennifer; Stepp, Melissa; Straube, James; Terracino, Jennifer; The New Human, LLC; Todd Auto Group and Sales, LLC; Uliss, Tyler; Venegas, Antonio; White, Dan W.; WRI Property Management.

Walton EMC
Customer-Owned Electric Power

Realite

THE *Rundown*

inside: lighting up your friday nights, lineman of the week
on the back: operation round up, unclaimed refunds

The news you need to know in 5 minutes!

SEPT 2018

Walton EMC
waltonemc.com

SEPT 2018 Volume 69, No. 9

QUICK GUIDE



IF YOUR POWER IS OUT

770.267.2505

waltonemc.com > Report an Outage

FIND US

Phone 770.267.2505

In person Monroe – 842 US Hwy. 78

Snellville – 3645 Lenora Church Rd.

Watkinsville – 2061-D Hog Mountain Rd.

Web waltonemc.com

Facebook facebook.com/waltonemc

YouTube youtube.com/emctv

WHEN WE'RE AVAILABLE

Power Outages and Emergencies > 24/7

Contact Center > M–F, 7A–7P

Business Offices > M–F, 8A–5P



EMC LEADERS

CEO Ronnie Lee

Sr. VP Corporate Services
Russell DeLong

Sr. VP Engineering & Operations Ron Marshall

Sr. VP Power Supply Robert Rentfrow

Sr. VP Finance Marsha Shumate

VP Walton Energy & External Affairs Jim Bottone

Board Chair Sam Simonton

Board Vice Chair Dawn Taylor

Board Sec./Treas. Dan Chelko

Board Members

Tommy Adcock, Billy Ray Allen, Johnny Allgood,

Michael Lowder, Jason Sidwell, Jim Whitley

Community and Public Relations Director

Greg Brooks, MCC

Communications Coordinator

Savannah Chandler, MCC

Design by mPrint Design Studio

NEED NATURAL GAS SERVICE?

770.GAS.HEAT > waltongas.com

NEED SECURITY SERVICE?

770.963.0305 > emcsecurity.com

©2018. Walton EMC is a customer-owned power company. That means our cooperative focuses on service, not profit. We serve more than 125,000 accounts in Athens-Clarke, Barrow, DeKalb, Greene, Gwinnett, Morgan, Newton, Oconee, Rockdale and Walton Counties. Our subsidiaries supply natural gas and security services.

WALTON EMC EARNS ITS HIGHEST J.D. POWER SCORE!

WALTON EMC SCORES

800

The cooperative scored 800, only four points behind the top utility and ranking it second nationally. Walton EMC's index score is well above the national average of 723, placing it in an elite group of electric utilities. Scores of 800 and above indicate exceptional customer satisfaction, and Walton EMC is one of only two electric utilities nationwide to reach this level.

6

 SATISFACTION FACTORS

- POWER QUALITY AND RELIABILITY
- PRICE
- BILLING AND PAYMENT
- CORPORATE CITIZENSHIP
- COMMUNICATIONS
- CUSTOMER SERVICE

Walton EMC achieved its highest score to date in the latest J.D. Power and Associates Electric Utility Residential Customer Satisfaction Study.

2

ND HIGHEST RANKING UTILITY IN NATION

104k

ONLINE INTERVIEWS WITH RESIDENTIAL CUSTOMERS

In specific categories the company uses to measure customer satisfaction, the co-op placed first in corporate citizenship, first in price, second in communications, third in billing and payment, sixth in power quality and reliability and 10th in customer service. The study is based on responses from more than 104,000 online interviews conducted from July 2017 through May 2018 among residential customers of the 138 largest electric utility brands across the country.

In 2014, J.D. Power ranked Walton EMC "Highest in Customer Satisfaction among Midsize Utilities in the South." The company also ranked Walton Gas "Highest in Residential Customer Satisfaction with Retail Gas Service Three Years in a Row" from 2011 through 2013, the year the gas market study was discontinued.

LIGHTING UP YOUR FRIDAY NIGHTS

Friday Night Lights. Throughout Walton EMC’s service area and around the nation, this phrase has one clear meaning: high school football.

Friday nights at 7 p.m. is when the action gets underway for the Titans, Warriors, Spartans, Lions, Rams, Generals, Comets and more. Walton EMC supplies electricity to 12 local high schools with football facilities. We’re proud to be the power source that makes Friday night lights possible for each.

A PIGSKIN PAST

Georgia schools have been fielding teams for competitive football matchups since 1896, according to the Georgia High School Football Historians Association. In fact, Walton County was home to one of the state’s first high school football programs that, in 1920, formed the Georgia Interscholastic Athletic Association, predecessor to today’s Georgia High School Association.

Monroe A & M, located in Monroe, served what was then a rural area of Georgia. Though it was more vocational-technical school than an actual high school, it qualified for the purposes of fielding a football team, historians note. Coached by Monroe institution David Irenius “Red” Barron, the team competed for a state championship for the next 17 years. Before World War II, A & M was replaced by North Walton High School, which later merged with other schools to become what is now Monroe Area High School.

A TRADITION IS BORN

Though our region is rich in high school football history, it wasn’t until the 1960s that schools in this area first installed lights that made it possible to play games at night. That’s when the notion of “Friday night lights” was born. Since then, prep gridiron matchups have provided the traditional kickoff to fall football weekends that also include collegiate and professional games.

In September 1968, Walton EMC’s member newsletter featured photos and an article about the installation of lights at Oconee County High School. As was typical then, school booster clubs, civic

organizations, government agencies and the cooperative teamed up to buy and install the lights. In this case, the lighting installation was the icing on a newly constructed football and baseball field.

“A lighting system has just been installed which consists of 160 fixtures each containing a 1,500 watt bulb. Six poles each house 16 lights, and two poles house 32 lights,” the story reported.

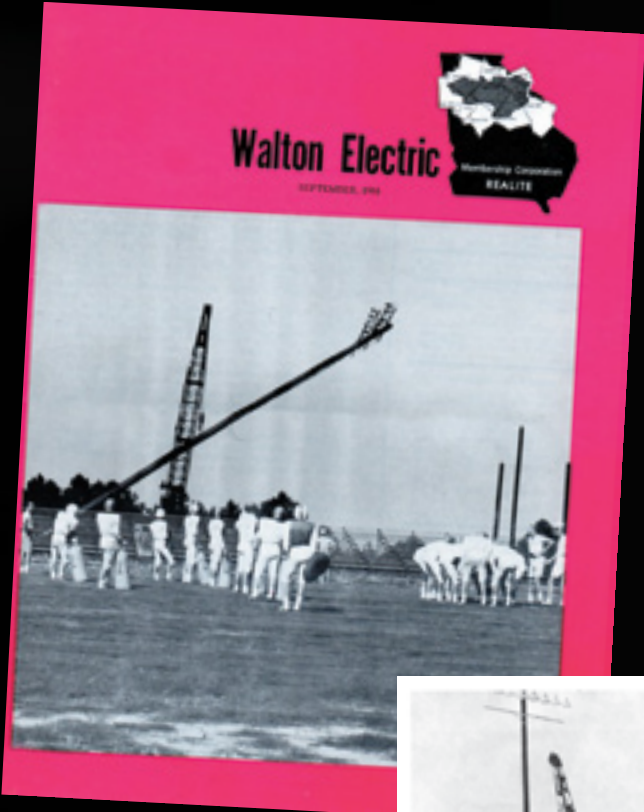
UNDER THE LIGHTS

Since area games began being played under the lights, Walton EMC has played an important role at fields and stadiums. Then, and now, we deliver the dependable electricity teams and fans count on.

Walton EMC provides the electricity to light up The Grove, home stadium for Walnut Grove High’s Warriors. And we power the scoreboard for the Brookwood High Broncos.

We’re also the power source that helps boosters crank out hot foods and cold beverages for Loganville’s Red Devils fans. Plus, co-op electricity powers the public address system, turns on the lights in the locker rooms and heats water for the laundry facilities at high schools like Prince Avenue Christian and Parkview.

Like those we serve, Walton EMC is conditioned and ready for a great season.



The cover of the September 1968 Realite shows a crane hoisting new lighting into place at Oconee County High School. Walton EMC played a pivotal role in getting the job done.



LET THE GAMES BEGIN!

WATCH FOR WALTON EMC'S Lineman of the Week

Back for another season, Walton EMC is proud to honor outstanding student-athletes through our Lineman of the Week program.

Every week, we travel to area high schools to recognize linemen who are the team’s unsung heroes and workhorses. The award recipients are recognized with a plaque and commemorative football. They are also featured on the Walton EMC Facebook page and WMOQ-FM (92.3) each Friday morning.

For Friday night scores and live reports from local games, tune in to Walton EMC’s Operation Round Up Score Board immediately following WMOQ’s Game of the Week.

