

# WALTON EMC + SILICON RANCH Bring More Solar Energy to Georgia

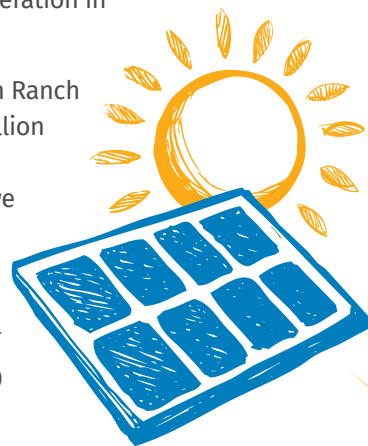
Walton EMC and Silicon Ranch have now completed six projects for Meta (formerly Facebook) with a seventh facility underway.

All seven solar facilities are part of an ongoing collaboration between Walton EMC and Silicon Ranch to supply 100 percent renewable energy for Meta's data center in Newton County, Georgia. Walton EMC and Silicon Ranch have now completed the installation of six projects totaling 435 megawatts (MW) on behalf of Meta, catalyzing meaningful investments in six separate rural communities across the state.

With the first six solar projects now in commercial operation, Silicon Ranch has begun construction of the partners' seventh project together, the DeSoto I Solar Farm, a 125 MW facility located in Lee County.

Construction is expected to be completed before the end of 2022, bringing the total capacity of the partners' portfolio to 560 MW of new renewable generation in Georgia.

"Our important work with Meta and Silicon Ranch has already generated more than half a billion dollars in capital investment across half a dozen counties throughout Georgia, and we are pleased to expand this legacy to Lee County," said Walton EMC CEO Ronnie Lee. "We are pleased to be working together again to help meet Meta's goal of supporting its Georgia operations with 100 percent renewable power."



## POWER IS MEASURED IN WATTS.

### watts (W)

The amount of power appliances use.  
Example: A 60-watt bulb consumes 60 watts of power to operate.



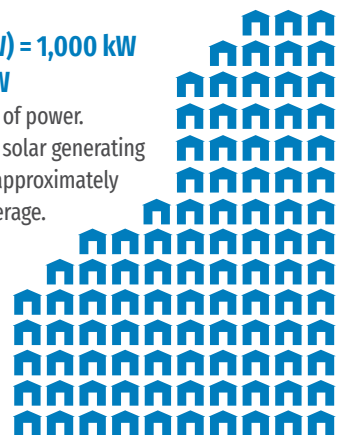
### kilowatt (kW) = 1,000 watts

The amount of power homes use.  
Example: The average Walton EMC customer-owner used 1,609 kWh per month in 2020.



### megawatt (MW) = 1,000 kW or 1,000,000 W

Massive amounts of power.  
Example: 1 MW of solar generating capacity powers approximately 100 homes on average.



1 MW of solar generating capacity powers approximately 100 homes on average.

## Unclaimed refunds IS THIS YOUR MONEY?

Mendez, Eder U; Weaver, Dorothy; Alumbaugh, Betty J; Noy, Andrew H; Marquez, Herminia; Collins, Leslie; Britt and Camp, LLC; Meeks, James; Musser, Mitchell; McBride, Andrea E; Tamashiro, Kuniko; Pernaselci, Elizabeth C; Salazar, Daniel; Aristide, Ligmy; Gaona, Jose; Albritton, Vicky L; Perez, Jaceca; Rowell, Janice T; Cotton, Jennifer; Allen, Takira C; Saintvil, Sunsheba; PMC SSFR Borrower, LLC; Bowlin, Lisa J; Hall, James D; Kabundi, Amante; Freo Georgia, LLC; Beavers, Delane D; Dowdle, Chuck; Mendoza, Perla G; Xiong, Tue; Pacific Holdings; Brightostone Acquisitions; Kiplan Real Estate; Choi, Youngkwon S; Boone, Darris; We, Jinhyuk; Leggs, Randolph; Famojuro, David O.

Walton EMC  
Customer-Owned Electric Power

# realite

FEB '22

- > operation round up
- > plugged in
- > powerful gadgets
- > solar energy



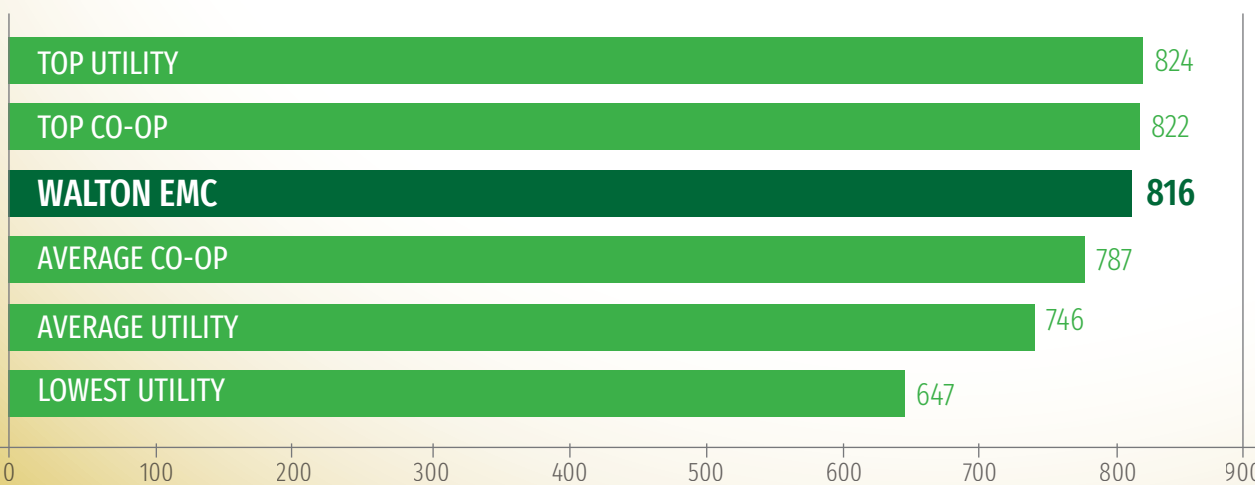
## WALTON EMC OCCUPIES FAMILIAR SPOT IN LATEST J.D. Power Satisfaction Survey

The recently released 2021 Electric Utility Residential Customer Satisfaction Study (bit.ly/WEMC-JDP-2021) ranked Walton EMC second among cooperative electric utilities nationwide and first in Georgia with a score of 816 (on a 1,000-point scale). It ranked fourth nationally among all types of utilities (cooperatives, government-owned and investor-owned).

The top-scoring cooperative posted a mark of 822. The average score for cooperative utilities is 787. For investor-owned utilities, that average drops 41 points to 746. The lowest ranking utility came in at 647.

The 2021 study is based on responses from 100,999 interviews conducted throughout the year among residential customers of the 145 largest electric utilities across the United States, says J.D. Power. The utilities surveyed represent more than 101 million households.

### 2021 J.D. POWER ELECTRIC UTILITY RESIDENTIAL CUSTOMER SATISFACTION SURVEY



Survey participants were asked to rate their utility's performance in six areas: power quality and reliability; price; billing and payment; communications; corporate citizenship; and customer care.

"Our primary task and reason for being is serving our consumers," said CEO Ronnie Lee. "Our employees and board treasure the confidence they put in us to deliver the essential electric power they depend on every day."

"Although the survey indicates they're satisfied with our service, we'll continue to find ways to improve. That includes not only improving their electric and customer service, but also improving the ways we serve their local communities."

Walton EMC  
waltonemc.com

REALITE FEB 2022 VOLUME 72, NO. 2

### quick guide

#### IF YOUR POWER IS OUT

770.267.2505  
waltonemc.com > Report an Outage

#### WHEN WE'RE AVAILABLE

Power Outages and Emergencies > 24/7  
Contact Center > M-F, 7A-7P  
Business Offices > M-F, 8A-5P

### find us

Monroe 842 US Hwy. 78  
Snellville 3645 Lenora Church Rd.  
Watkinsville 2061-D Hog Mountain Rd.

Web waltonemc.com  
Facebook facebook.com/waltonemc  
Twitter twitter.com/waltonemc  
Youtube youtube.com/emctv

### our leaders

CEO Ronnie Lee  
COO Ron Marshall  
Senior VP Corporate Services Russell DeLong  
Senior VP Power Supply Robert Rentfrow  
CFO/Senior VP Finance Marsha Shumate  
VP Walton Energy and External Affairs Jim Bottone  
VP of Engineering and Operations Tim Morris  
Board Chair Dawn Taylor  
Board Vice Chair Michael Lowder  
Board Secretary/Treasurer Billy Ray Allen  
Board Members Tommy Adcock, Johnny Allgood, Dan Chelko, Jason Sidwell, Sam Simonton, Jim Whitley  
Public Relations Director Greg Brooks, MCC  
Communications Coordinator Savannah Chandler, MCC  
Design mPrint Design Studio

### walton gas

NEED NATURAL GAS SERVICE?  
770.GAS.HEAT or waltongas.com

### emc security

NEED SECURITY SERVICE?  
770.963.0305 or emcsecurity.com

©2022 Walton EMC is a customer-owned power company. That means our cooperative focuses on service, not profit. We serve more than 135,000 accounts in Athens-Clarke, Barrow, DeKalb, Greene, Gwinnett, Morgan, Newton, Oconee, Rockdale and Walton Counties.

Our subsidiaries supply natural gas and security services.



## Operation Round Up

### RECENT GRANTS

**Athens Clarke Co. Sexual Assault Nurse Examiners – \$5,000.** Agency that provides forensic examinations and evidence collection, court testimony, and community prevention education related to rape, sexual and physical assault. **Project:** Family Protection center at Mission Road – New center in Morgan County. *Barrow, Clarke, Greene, Morgan, Newton, Oconee and Walton Counties.*

**Bridge the Gap Ministries – \$4,000.** Christian organization that supports men and women who are or have been incarcerated. **Project:** Extended stay motel assistance and homeless needs. *Dekalb and Gwinnett Counties.*

**Burn Foundation of America – \$7,500.** Organization that supports families of burn victims at the JMS Burn Center in Augusta. **Project:** Direct Burn Patient Services. *All of Walton EMC Territory.*

**Canopy Studio – \$2,500.** Aerial arts center where people of all ages and abilities learn the art of aerial dance and performance. **Project:** Canopy Studio Outreach Program – Financial support for students with special needs, autism, emotional and behavioral disorders to attend classes. *All of Walton EMC Territory.*

**Extra Special People, Inc. – \$7,500.** ESP exists to create transformative experiences for people with disabilities and their families, changing communities for the better. **Project:** Family Support. *All of Walton EMC Territory.*

**Falcons Fury Phoenix Pass – \$1,800.** Organization that serves the needs of women and their dependent children experiencing homelessness by giving them the opportunity to reestablish self-sufficiency in a stable residential setting. **Project:** Phoenix Pass Christmas Gifts. *Gwinnett, Rockdale and Walton Counties.*

**KidsPeace National Centers of Georgia – \$5,000.** Mental health organization that provides mental health care to youth and their families. **Project:** KidsPeace Georgia Recreation Revitalization Project – Funds will be used to repair and revitalize the outdoor basketball courts and restore the indoor gymnasium flooring. *Barrow, Clarke DeKalb, Gwinnett, Newton, Oconee, Rockdale and Walton Counties.*

**Madison Morgan Community Food Pantry – \$5,000.** **Program:** Food Pantry – Funds will go towards purchasing food in bulk for weekly distribution. *Morgan County.*

**Rachel's Gift, Inc. – \$5,000.** Provides specialized bereavement care for parents who lose a child to miscarriage, stillbirth, or infant death. **Program:** Infant bereavement services and supplies – education training and family keepsake boxes. *All of Walton EMC Territory.*

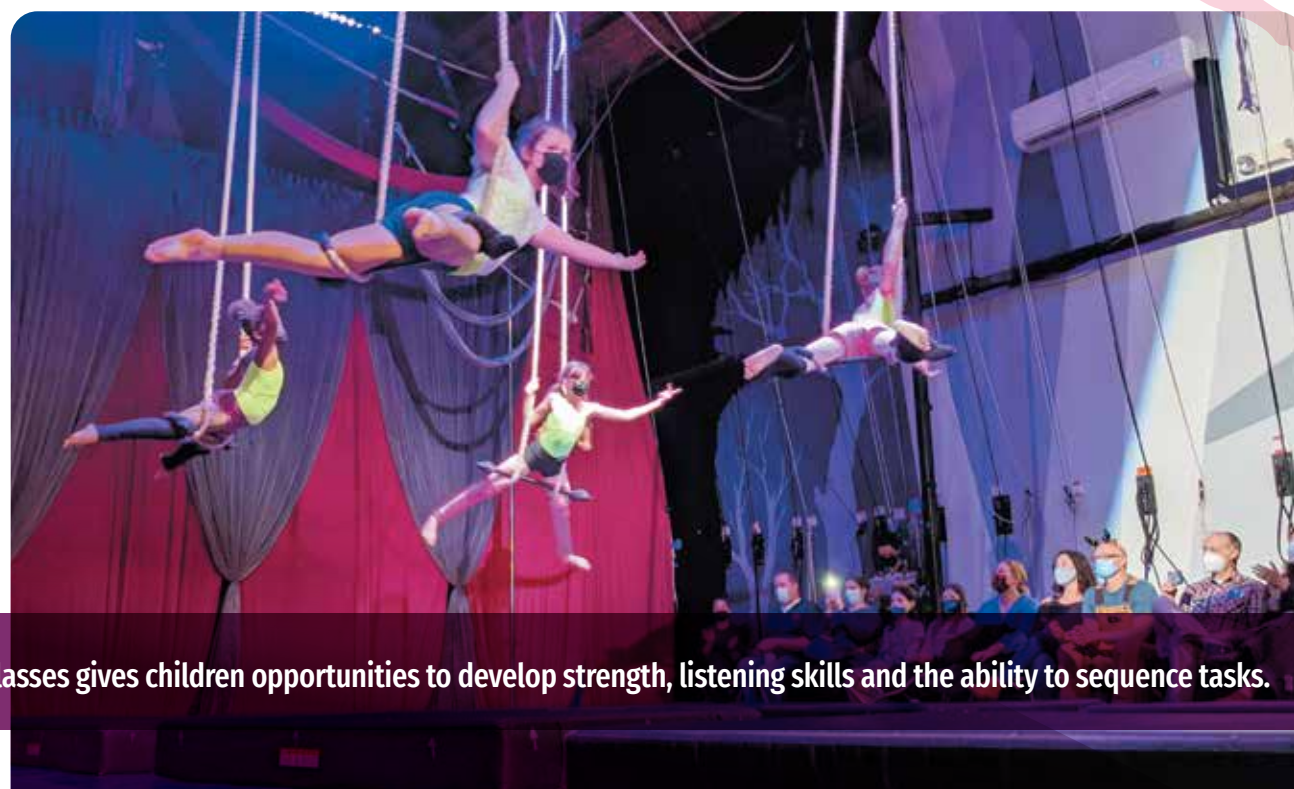
**Side by Side Brain Injury Clubhouse, Inc. – \$3,500.** Organization that helps patients rebuild lives after brain injuries. **Program:** Scholarship Fund – Funds will go towards those who qualify and cannot afford. *DeKalb, Gwinnett and Newton Counties.*

**\$20,000** was approved to be distributed to **American Red Cross of Northeast Georgia** and **Atlanta Community Food Bank** that provide emergency food, shelter, and medical needs. Funding comes from our unclaimed capitol credits account.

The board approved assistance to **six families totaling \$27,901.43**

### WANT TO HELP?

Go to the "Community" tab at [waltonemc.com](http://waltonemc.com) and click on the Operation Round Up link. Every customer-owner's donation helps those in need. Walton EMC covers all administrative costs of the program.



Participating in trapeze and movement classes gives children opportunities to develop strength, listening skills and the ability to sequence tasks.

### Helping Kids Fly High Operation Round Up grant supports outreach program


The trapezes hanging from the rafters are a dead giveaway that Canopy Studio in Athens is not your average dance school. Here, people of all ages and abilities learn the art of aerial dance and performance – movement education that enriches their lives.

Canopy is the largest non-profit aerial dance studio in the Southeast. But size isn't nearly as important as impact, particularly on children with disabilities, says Ann Woodruff, executive director.

"Trapeze really is more than just hanging upside down and having fun," the special education teacher said. "Aerial arts is a recognized medium for bringing happiness, creativity, physical challenge and confidence to those that participate."

At normal capacity, Canopy Studio's outreach program provides therapeutic instruction to about 50 students with disabilities. Most receive one-on-one instruction provided at no charge thanks to donations like the \$2,500 Walton EMC Operation Round Up grant. The grant is providing private lessons for 15 students for a 10-week period.

Participating in trapeze and movement classes gives children opportunities to develop strength, listening skills and the ability to sequence tasks. These skills carry over into other parts of their lives, helping these students to fly high even when their feet are planted firmly on the ground.



## PLUGGED IN

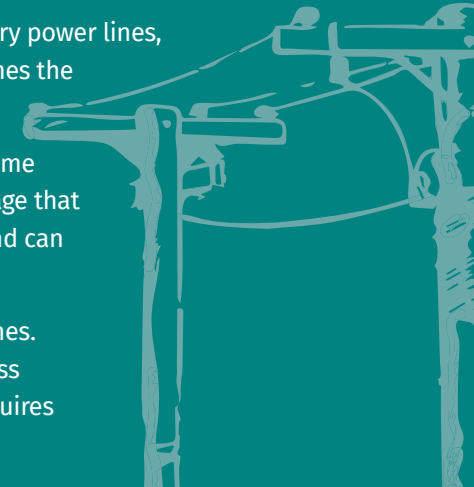
**Q: Why aren't all Walton EMC power lines buried underground?**

**A:** When we experience a power outage due to falling power lines, an underground power grid seems attractive. Buried power lines have their benefits, but there are also significant drawbacks that keep Walton EMC and the entire U.S. electric utility industry from converting entirely to an underground grid.

Expense is the main roadblock. It costs roughly \$750 per foot to bury power lines, compared with \$70 per foot to install overhead lines. At over 10 times the cost, it would certainly impact what you pay for power.

Underground power lines are still vulnerable to the elements in some ways, too. Though they are protected from wind, ice and tree damage that can cause outages, buried lines are more vulnerable to flooding and can still fail due to equipment issues or lightning.

Underground power lines are harder to maintain than overhead lines. Walton EMC employees must use earth-moving equipment to access buried lines for repairs, disrupting yards and landscaping. This requires more time than climbing a pole.



## POWERFUL GADGETS

### Gear Up for Game Day

The 56th Super Bowl kicks off at 6:30 on Sunday, Feb. 13. The Big Game provides a great excuse to upgrade your home entertainment system.

**GO BIGGER**  
If you're hosting a watch party, up your viewing game with a video projector that can deliver a huge screen size. These compact devices make it possible to watch sports, movies and TV shows simply by hooking up your laptop or streaming device and projecting the picture onto a screen or blank wall.

**UPGRADE THE SOUND**  
Adding a sound bar or full-fledged speaker system to your TV makes sporting events more exciting. For about \$100, you can get a sound bar with Bluetooth streaming audio and HDMI, the basics for better sound. The Roku Streambar (\$100) delivers value by combining excellent sound with a streaming device, advise reviewers at CNet.com.

To hear every bone-crunching moment, shop for a home theater sound system that has Dolby Atmos decoding. Systems start around \$1,000.

The tech experts at the Good Housekeeping Institute choose the Epson Home Cinema 2150 (\$1,577) as the best overall home projector. However, there are some very capable projectors available for around \$550.

