

EMC SECURITY

Text Notifications Offer Enhanced Customer Experience

EMC Security is committed to providing options that simplify customers' lives and make it easier to use their security systems.

In that spirit of convenience, EMC Security is offering a free, innovative text notification option you won't see anywhere else. With EMC Text-Alert, customers can opt-in to be notified via text when EMC Security receives an alarm signal. The customer can cancel the alarm or dispatch authorities with a text message. This feature will not replace the call notification process; if the text is not accessed within 60 seconds, the call procedure will begin.

Studies have shown that the new texting platform has decreased false alarms significantly, reducing false alarm fines and frustration.

The texting tool is also used to notify the customer of non-emergency situations such as power outages, low battery or trouble signals. Upon receipt, the customer can request technical support to quickly resolve the issue.

EMC Text-Alert is a great way to reach customers who can't immediately take a call. This new tool allows EMC Security to reach customers in a way they prefer, so they can make critical decisions in real time and take action quickly.

EMC Text-Alert is provided to security customers at no additional cost.



To learn more about EMC Text-Alert, contact EMC Security at 770-963-0305.

TALKING TREES: HELP US KEEP THE POWER FLOWING

Keeping your power on 24/7/365 is job one at Walton EMC. Minimizing vegetation around our distribution lines is one way we achieve this level of reliability.

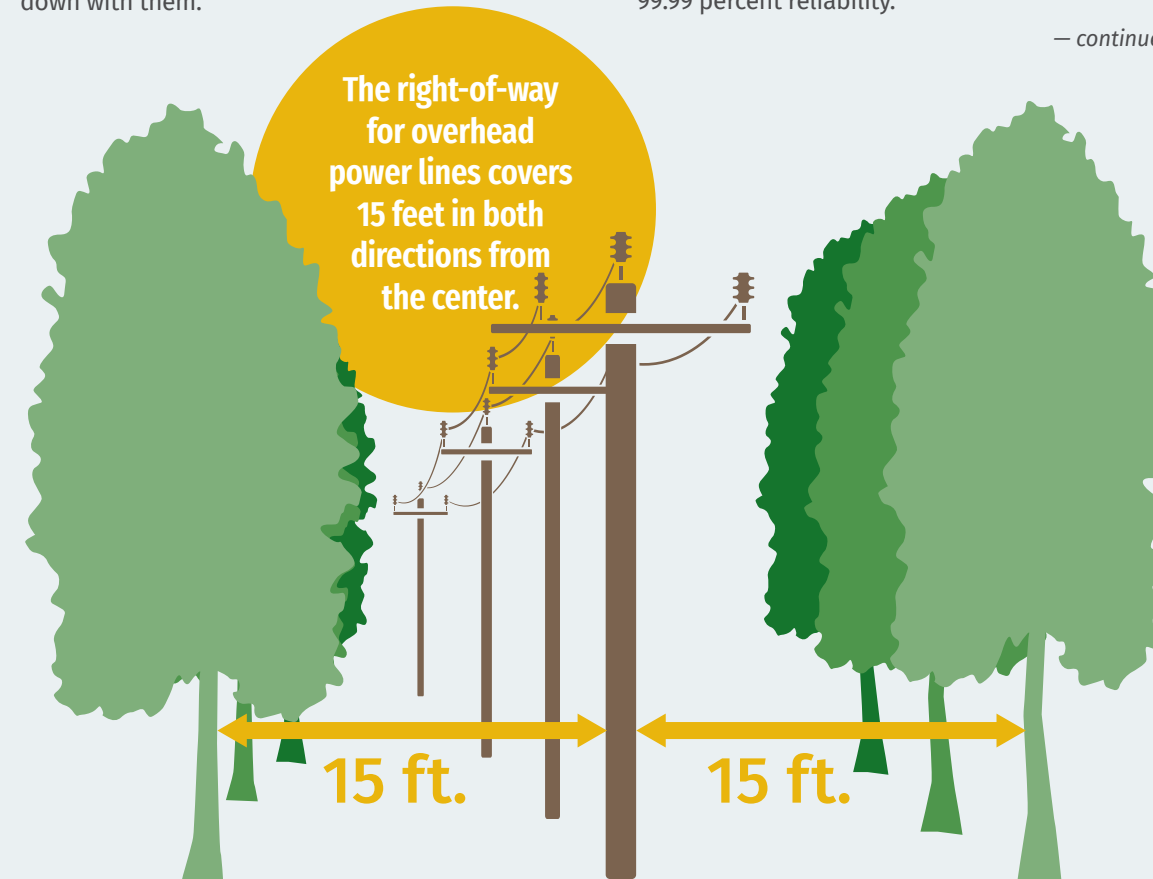
As Walton EMC's right-of-way (ROW) coordinator, it's Eric Floyd's job to see that trees don't grow too close to the co-op's electric lines. Tree limbs that come in contact with power lines cause about 80 percent of electrical outages, Walton EMC engineers estimate. If limbs break and fall, which frequently happens during Georgia's stormy seasons, they can bring power lines down with them.

"We all love beautiful trees, but not at the expense of sitting in the dark — and maybe extreme hot or cold — while co-op linemen fix lines that have been torn down by falling trees," Eric said.

Eric oversees the ROW teams responsible for maintaining 7,000 miles of power lines, trimming every section once every four years. This helps the co-op maintain an exceptional 99.99 percent reliability.



— continued inside



PLUGGED IN Q&A

Q: Why can't I prune trees that are near Walton EMC power lines?

A: You should NOT touch — let alone prune — a tree that's in contact with a power line, including the service wire leading to your house. It's very dangerous and can even be lethal.

The water in a living tree's tissues can conduct electricity. (Even a dead tree is dangerous, if it's wet.) When any part of a tree is electrified, the current passes through its tissues. Energy will flow through a person who's touching the tree and the ground, causing electrocution.

Even if a tree isn't touching an energized line, a branch can unexpectedly make contact when there's a gust of wind or while being pruned. Pruning tools, such as a long-handled saw or a ladder, could accidentally touch the power lines, too.

We don't recommend trimming any trees within 10 feet of an electrical line. If an overgrown tree or shrub is threatening a power line, report it to Walton EMC at 770-267-2505 for a safe solution.

quick guide

IF YOUR POWER IS OUT

770.267.2505
waltonemc.com > Report an Outage

WHEN WE'RE AVAILABLE

Power Outages and Emergencies > 24/7
Contact Center > M-F, 7A-7P
Business Offices > M-F, 8A-5P

find us

Monroe 842 US Hwy. 78
Snellville 3645 Lenora Church Rd.
Watkinsville 2061-D Hog Mountain Rd.

Web waltonemc.com
Facebook facebook.com/waltonemc
Twitter twitter.com/waltonemc
Youtube youtube.com/emctv

our leaders

CEO Ronnie Lee
COO Ron Marshall
Senior VP Corporate Services Russell DeLong
Senior VP Power Supply Robert Rentfrow
CFO/Senior VP Finance Marsha Shumate
VP Walton Energy and External Affairs Jim Bottone
VP of Engineering and Operations Tim Morris
Board Chair Dawn Taylor
Board Vice Chair Michael Lowder
Board Secretary/Treasurer Billy Ray Allen
Board Members Tommy Adcock, Johnny Allgood, Dan Chelko, Jason Sidwell, Sam Simonton, Jim Whitley
Public Relations Director Greg Brooks, MCC
Communications Coordinator Savannah Chandler, MCC
Design mPrint Design Studio

walton gas

NEED NATURAL GAS SERVICE?

770.GAS.HEAT or waltongas.com

emc security

NEED SECURITY SERVICE?

770.963.0305 or emcsecurity.com

TALKING TREES: HELP KEEP THE POWER FLOWING

— continued from front

Co-op members can do their part to keep Walton EMC's rights-of-way clear and accessible, Eric reminds.

He encourages members to always check ROW guidelines at waltonemc.com/customer-service/power-line-rights-of-way before planting trees and shrubbery near power lines.

He also urges members to look up at their service wire, the line that runs from the co-op's transformer and distribution line to a home or business. If a tree's branches are near or already touching the service wire, members should contact the co-op to request a courtesy pruning.

"Our chief responsibility is maintaining the right-of-way for primary electric lines, but we're happy to help our members by providing expert, safe tree trimming for individual service wires," Eric said. Members should never attempt clearing vegetation from live power lines; it is extremely dangerous.

A crew will usually arrive within three business days to handle the pruning project. They do not clean up or haul away the resulting brush from a service line trim.

"While we do clean up from primary line trimming, it's a common misconception that we also pick up the debris from a service line trim. That's the responsibility of the customer-owner," the coordinator said.

MORE TREE TALK

In this month's Walton EMC blog (waltonemc.com/news/blog/), Eric answers your questions about ROW management.

POWERFUL GADGETS



The Consumer Electronics Show (CES) annually provides a look into the technological crystal ball. Manufacturers and inventors from around the globe gather to showcase everything from auto advancements to Z-series tablets that have the potential to change how we live and work.

This year, the product generating the most tech world buzz is an electric pickup truck — but maybe not the one you were expecting. Ford's fully electric F-150 Lightning was among the much-anticipated electric vehicles of 2021, but Chevy's 2024 Silverado EV is taking center stage this year.

The new Silverado EV offers 400 miles of range on a full charge. That's significantly more than the Lightning's 230-mile

400 miles on a full charge!



Chevy EV has tech world buzzing

distance. It also boasts fast-charging speeds capable of adding 100 miles to range in around 10 minutes. Chevy dealers are taking preorders for the electric truck, which costs \$39,900 to \$105,000 for a limited-edition model. The first are due to be delivered in fall of 2023.

We spotlight some of our favorite gadgets from the 2022 CES in this month's Walton EMC blog (waltonemc.com/blog).

FUNDamental Support for Our Community

Walton EMC's mission is to deliver reliable and affordable electricity.

We operate by guiding principles that include caring for our communities. Here's how we made a financial impact in the areas we serve during 2021.

Operation Round Up	\$569,112
Walton Electric Trust Scholarships	\$304,500
UGA Engineering Leadership Scholarship	\$1,300,000
School EmPOWERment Grants	\$294,565
Walton EMC Corporate Donations	\$212,708
Walton EMC Employee Charities	\$77,969
TOTAL DONATIONS	\$2,758,854

Property Taxes	\$2,703,364
Ad Valorem Taxes	\$54,460
Sales Tax	\$18,903,922
Franchise Fees	\$2,183,293
TOTAL TAXES	\$23,845,039



Caulk Talk

How to get a smooth seal over gaps and cracks



If air leaks are causing your heating and cooling system to work harder, it's time to get caulking. Try these techniques to get a smooth, mess-free seal.

CHECK the weather. Apply caulk during dry weather when the outdoor temperature is above 45 degrees F.

CHOOSE the right caulk. Know your intended use (interior versus exterior surfaces, for instance) and buy caulk labeled for that specific situation.

GET a good gun. A dripless caulk gun gives you more control of the flow.

START with a clean surface. Remove old caulk, paint, dirt, dust, grease and debris.

TAPE the area. Attach strips of painter's tape about 1/8 inch away from both sides of the seam to mask off areas where caulk shouldn't be applied.

CUT carefully. Cut the caulk tube nozzle tip small and do the small gaps first. Then, cut it bigger for the larger gaps.

USE both hands. Use your dominant hand to hold the gun and pull the trigger. Support the barrel of the gun near the tip with your other hand.

PUSH, don't pull. To get a better seal, push the caulk into the gap rather than dragging over it.

MEET in the middle. When you have a long bead to run, caulk from one end to the middle of the seam. Then, start at the other end and meet the first bead.

FINISH with your finger. Moisten your fingertip and drag it with light pressure along the bead to smooth.

Read more caulking tips at waltonemc.com/blog.

As seen on facebook

