

Walton EMC rates less than state average

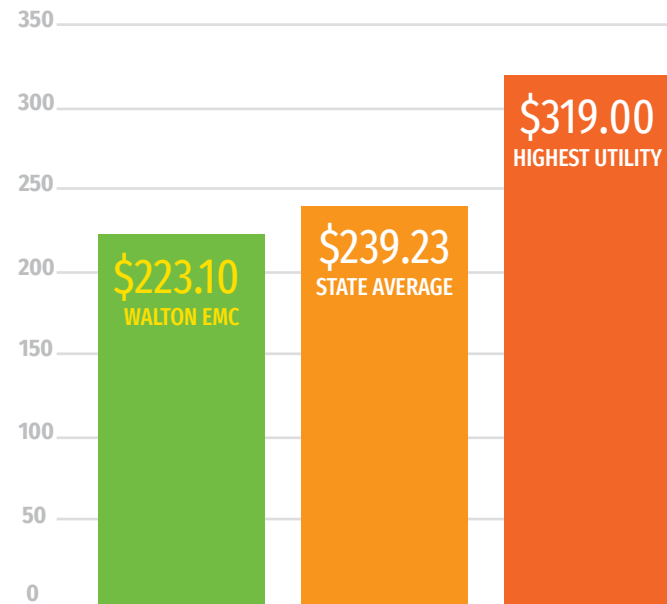
The Georgia Public Service Commission (PSC) recently published the Winter 2023 Residential Electric Rate Survey at psc.ga.gov.

The commission surveys the rates of the state's customer-owned (EMCs), government-owned and investor-owned electric companies twice yearly.

The PSC's website allows you to filter by survey date, utility type and consumption.

The average Walton EMC customer-owner used 2,360 kilowatt-hours (kWh) during December 2022.

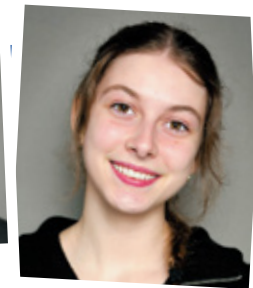
All Georgia Electric Providers at 2,000 kWh



Deeya Mepani



Keely Gray



Julianna Walker



Katia Busch

Four student leaders to represent Walton EMC

Following a rigorous application process, student leaders Deeya Mepani, Keely Gray, Julianna Walker and Katia Buch have been selected to represent Walton EMC on the 2023 Washington Youth Tour. They will join nearly 2,000 student delegates from around the country for a weeklong, all-expense-paid leadership experience in June.

The leadership development opportunity is meant to inspire the next generation of leaders. This year's tour, which takes place June 15-22, will give the local delegates a taste of democracy in action, expose them to the nation's history through visits to national monuments and museums, and encourage them to be politically aware citizens.

"Engaging and educating young leaders is crucial to ensuring our community, state and nation will be in good hands," said Jennifer Broun, who coordinates the activity for Walton EMC. "We see the tour as a way to kindle the spark of leadership in high schoolers."

To The students representing Walton EMC are all from North Oconee High School. This is the first time all four delegates have been selected from one school, Broun noted.



Walton EMC
Customer-Owned Electric Power

APR '23

- > making solar do more
- > pull in, plug in
- > walton emc rates
- > youth tour delegates

SO MUCH MORE THAN electricity

In addition to supplying affordable, reliable electric power, Walton EMC makes a huge impact on the communities we serve.

2022 Donations

Operation Round Up	\$591,951
Walton Electric Trust Scholarships	\$304,000
School EmPOWERment Grants	\$368,212
Walton EMC Corporate Donations	\$242,924
Walton EMC Employees Charities	\$82,456

\$1,589,543

2022 Taxes

Property Taxes	\$2,761,570
Ad Valorem Taxes	\$74,546
Sales Tax	\$21,185,152
Franchise Fees	\$2,347,209

\$26,368,477



Over \$27 million in donations and taxes to strengthen our community in 2022.

Walton EMC
waltonemc.com

REALITE APR 2023 VOLUME 73, NO. 4

quick guide

IF YOUR POWER IS OUT
770.267.2505
waltonemc.com > Report an Outage

WHEN WE'RE AVAILABLE
Power Outages and Emergencies > 24/7
Contact Center > M-F, 7A-7P
Business Offices > M-F, 8A-5P

find us

Monroe 842 US Hwy. 78
Snellville 3645 Lenora Church Rd.
Watkinsville 2061-D Hog Mountain Rd.

Web waltonemc.com
Facebook facebook.com/waltonemc
Twitter twitter.com/waltonemc
Youtube youtube.com/emctv

our leaders

CEO Ron Marshall
Senior VP Corporate Services Russell DeLong
CFO/Senior VP Finance Marsha Shumate
VP Walton Energy and External Affairs Jim Bottone
VP Engineering and Operations Tim Morris
VP Power Supply Hudson Kingery
Board Chair Dawn Taylor
Board Vice Chair Michael Lowder
Board Secretary/Treasurer Billy Ray Allen
Board Members Tommy Adcock, Johnny Allgood, Dan Chelko, Jason Sidwell, Sam Simonton, Jim Whitley
Public Relations Director Greg Brooks, MCC
Communications Coordinator Savannah Chandler, MCC
Design mPrint Design Studio

walton gas

NEED NATURAL GAS SERVICE?
770.GAS.HEAT or waltongas.com

emc security

NEED SECURITY SERVICE?
770.963.0305 or emcsecurity.com

©2023 Walton EMC is a customer-owned power company. That means our cooperative focuses on service, not profit. We serve more than 135,000 accounts in Athens-Clarke, Barrow, DeKalb, Greene, Gwinnett, Morgan, Newton, Oconee, Rockdale and Walton Counties. Our subsidiaries supply natural gas and security services.



Q: Do I have to call 811 before planting a tree?

A: Whether you're planting a tree, putting up a new mailbox, installing a fence or even planting a garden, Georgia law requires you to contact 811 before digging. Why? Hitting an underground utility line can knock out service to your home and neighborhood or result in fines, damage or even serious injury.

Call 811 or visit georgia811.com at least three business days in advance of your digging project to request that the location of buried utilities be marked. Don't forget that erosion or root structure growth may shift the locations of your utility lines, so you must call again each time you are planning a digging job.

Once lines are marked, you're free to dig but do so carefully around the marks, not on them.



ENERGY SAVERS DO A LITTLE, SAVE A LOT

Clean your dryer's lint filter after each use. A dirty lint trap can reduce a dryer's energy efficiency up to

75%

Making solar do more

WALTON EMC PROJECT IS GENESIS OF INDUSTRY'S REGENERATIVE STANDARD

Walton EMC and its partner Silicon Ranch are the undeniable leaders in generating renewable energy to support new industry in Georgia. In just four years, they have collaborated to install seven solar facilities to support Meta's (formerly Facebook) operations in Newton County. This number will grow to 10 over the next three years.

While the advantages of renewables are well known, the biggest benefit of these projects may be the one not predicted. An idea sparked during implementation of the collaborators' first project could have a lasting impact on Georgia's environmental and agricultural landscape as well as the entire solar power industry.

A BRIGHT IDEA

Shortly after announcing the first solar installation in 2018, the partners received a call from Will Harris, a neighboring farmer using regenerative agricultural practices to produce food and care for the land. His idea: Keep the former cotton farm in agricultural production by using livestock to graze vegetation.

Managing vegetation so it wouldn't interfere with panels getting sunlight was essential, said Matt Beasley, Silicon Ranch's chief commercial officer.

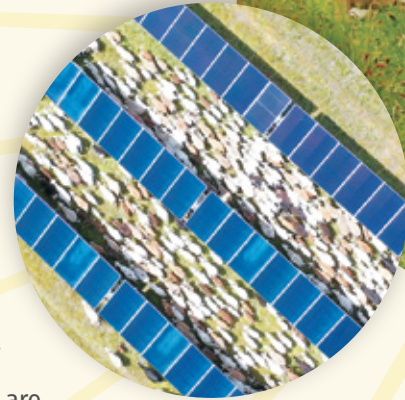
"We considered grass a liability because it had to be mowed and sprayed," he said. "But Will [Harris] turned our thinking upside down. We realized vegetation could be an asset that could multiply the good we do at each solar property."

Inspired by this epiphany, Silicon Ranch revamped its entire land management strategy. Instead of taking land out of agricultural use to build large-scale solar farms, the company's "regenerative energy" model would deliver both clean solar



"We realized vegetation could be an asset that could multiply the good we do at each solar property."

—Matt Beasley, Silicon Ranch's chief commercial officer



Walton EMC's Greg Brooks used a drone to capture this aerial photo (left) of sheep heading out for a day of managed grazing at one of the solar farms generating renewable energy used by Meta's data center in Newton County.

electricity and grass-fed meats. Bonus benefits would be healthy soil and water, increased biodiversity and sequestered carbon.

In early 2020, sheep began grazing at the Bancroft Station solar facility, making it Silicon Ranch's first official regenerative farming initiative. Sheep now graze at three Walton EMC-partnered solar farms. Eventually, all 10 solar farms will have grazing sheep.

"We plan to grow our flock to well over 10,000 sheep," Beasley said, noting this will double the state's total sheep population.

SETTING THE STANDARD

Silicon Ranch leaders believe the benefits of their Regenerative Energy® model born in Georgia will have far-reaching effects. "We think it will change the course of the solar industry," Beasley said. "Holistic farming just adds another benefit to the positive impact of solar energy. The model we're sharing with the industry can do good things for the environment, local economies and future rural generations."

Pull in, plug in

Jeff Paul, Walton EMC's director of member services, has been keeping his eye on an interesting trend occurring throughout the co-op's service area. He's been watching the number of electric vehicle registrations climb.

He points to Gwinnett County as an example of how EVs are gaining in popularity locally.

"As of February 20, 2023, there were 808,936 registered vehicles in Gwinnett. Of those, 6,443 are electric," he said. More than 1,000 EVs were registered in the county from October 2022 to February 2023 alone.

It's no wonder then that about 30% of the phone calls Paul receives are from co-op members who are interested in "fueling up" their vehicles via an electrical outlet in their garage.

If you're in the market for an EV, make the installation of a home charging station an early priority, Paul advises. His tips:

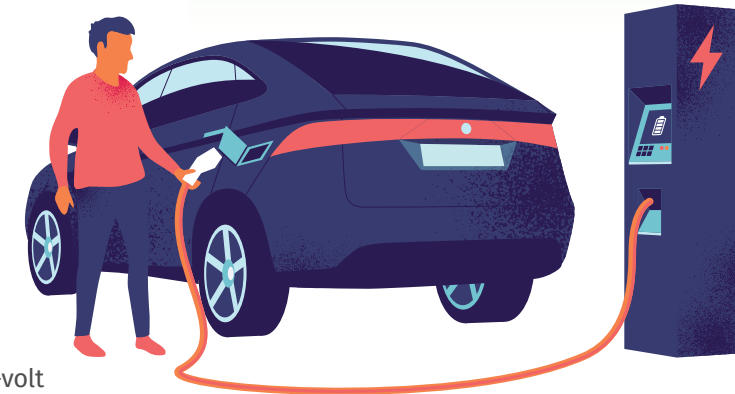
- The most popular EV charger requires a 240-volt outlet. Most existing homes don't have this type of outlet in the garage.
- Have a licensed electrician evaluate your home electrical system to determine whether upgrades will be needed to add the required outlet. Installation should also be handled by a pro.

If you're building a new home, put a 240-volt outlet in the garage — even if an EV isn't in your immediate plans. Installing the outlet during construction is less expensive than adding one later.

6,443

EVs registered in Gwinnett County*

*As of February 20, 2023



POWERFUL GADGETS

For more advice about installing an EV charger, visit driveelectricgeorgia.org.



Visit waltonemc.com and click on the banner to hear Walton EMC linemen tell about their effort to restore power to Florida residents after Hurricane Ian.