

Vehicle & Equipment Sale at Walton EMC



Walton EMC will be holding a vehicle and equipment sale Dec. 4–8 at the co-op's main office located at 842 U.S. Hwy. 78 in Monroe. A variety of vehicles and equipment will be available for viewing during this time.

If you see an item you are interested in purchasing, you can submit a sealed bid that must be postmarked no later than Dec. 9. Walton EMC reserves the right to refuse any and all bids, including those deemed to be unreasonably low.

This is a great opportunity to get quality pre-owned vehicles and equipment at reasonable prices.

VEHICLE #	YEAR	DESCRIPTION	MILEAGE
1061	2008	Ford Fusion SE	86,993
1063	2011	Ford Escape MPV	212,114
1151	2007	Toyota Camry Four Door	185,549
1331	2001	International 4700 Dump Body	143,293
1501	2011	Ford F150 Regular Cab Pickup	183,388
1712	2008	Ford F350 Service Utility Body	175,935
1722	2008	Ford F250 Pickup	196,244
1771	2005	Ford F350 Pickup	176,482
1781	2009	Ford E250 Van	177,938
1791	2010	Ford E250 Van	213,760
2331	2007	International 4300 Digger/Derrick	79,590
3221	2004	Ford F450 Pickup	208,641
2141	2008	F150 Pickup	212,078

TRACTOR #	YEAR	DESCRIPTION	HOURS
81	2003	M910 Centerline Trencher w/RT70M Powershift Ditch Witch	604
82	2003	Case 580SM Loader/Backhoe	1,026
89	2005	Kubota KX121-3R3S Excavator	2,485
90	2006	KX161-3R3S Excavator	2,692
96	2012	Kubota KX121-R1AT3 Excavator	4,209

Walton EMC
Customer-Owned Electric Power

realite

NOV '23

- > lightning strike
- > portable gfci
- > plugged in
- > vehicle & equipment sale

Veterans Day THE CO-OP WAY

This month Americans will recognize the service of the nation's more than 18.5 million military veterans. Veterans Day, Nov. 11, is especially important here in Georgia, which boasts the fifth largest military population in the country, including almost 700,000 former service members and over 101,000 military retirees. Many of them live along Walton EMC's power lines, and some are employed by the co-op.

An annual luncheon is held to honor Walton EMC employees and Board members who are veterans. John Hamm, supervisor of facilities and maintenance, always looks forward to attending.

"I'm usually the youngest veteran in the group," said Hamm, who served in Afghanistan as a member of the Georgia National Guard. "It's always interesting to hear the stories from each generation of veterans."

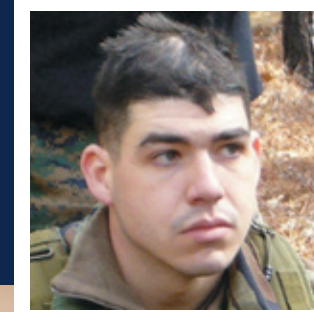
Hamm's commitment to the armed forces began in college. He joined the ROTC while attending the state's senior military college, now called University of North Georgia. Meanwhile, he was working weekends at Walton EMC.

He spent nearly a year in Afghanistan, leading a platoon tasked with training local police officers. The experience taught him the importance of self-reliance, a skill he's used as a fulltime Walton EMC employee for 13 years.

"I do what I say I'm going to do, and I don't send anybody to do a job I wouldn't do myself," he said, summing up the mindset he's brought to work for 13 years as a fulltime co-op employee.

He supervises nine Walton EMC employees who maintain 13 buildings, three solar array fields and other facilities owned by the co-op. They are responsible for all aspects of facility upkeep and repairs.

Hamm will take a brief break from his duties to enjoy a meal with fellow veterans. Seated at the table will be guardsmen, soldiers, airmen, sailors and marines. Some saw combat in Vietnam and during Operation Desert Storm. Others served their country in military support and peacekeeping roles. Whenever the service and whatever the uniform, Hamm is proud to be among them.



save up to **3%**
in water heating costs when you insulate exposed hot water pipes.

Walton EMC
waltonemc.com

REALITE NOV 2023 VOLUME 73, NO. 11

quick guide

IF YOUR POWER IS OUT
770.267.2505
waltonemc.com > Report an Outage

WHEN WE'RE AVAILABLE
Power Outages and Emergencies > 24/7
Contact Center > M-F, 7A-7P
Business Offices > M-F, 8A-5P

find us

Monroe 842 US Hwy. 78
Snellville 3645 Lenora Church Rd.
Watkinsville 2061-D Hog Mountain Rd.
Web waltonemc.com
Facebook facebook.com/waltonemc
Twitter twitter.com/waltonemc
Youtube youtube.com/emctv

our leaders

President and CEO Ron Marshall
Senior VP Corporate Services Russell DeLong
CFO/Senior VP Finance Marsha Shumate
VP Walton Energy and External Affairs Jim Bottone
VP Engineering and Operations Tim Morris
VP Power Supply Hudson Kingery
Board Chair Michael Lowder
Board Vice Chair Jason Sidwell
Board Secretary/Treasurer Billy Ray Allen
Board Members Tommy Adcock, Dan Chelko, Stan Pitts, Sam Simonton, Dawn Taylor, Jim Whitley
Public Relations Savannah Chandler, Morgan Spivey
Design mPrint Design Studio

walton gas

NEED NATURAL GAS SERVICE?
770.GAS.HEAT or waltongas.com

emc security

NEED SECURITY SERVICE?
770.963.0305 or emcsecurity.com

©2023 Walton EMC is a customer-owned power company. That means our cooperative focuses on service, not profit. We serve more than 135,000 accounts in Athens-Clarke, Barrow, DeKalb, Greene, Gwinnett, Morgan, Newton, Oconee, Rockdale and Walton Counties. Our subsidiaries supply natural gas and security services.



PLUGGED IN

Q: When are applications due for the 2024 Washington Youth Tour?

A: We've made some changes to our annual Washington Youth Tour selection process, which includes an earlier deadline for submitting applications. The deadline is Dec. 8 to apply to become a Walton EMC delegate at the 2024 Washington Youth Tour, June 14–21. Applications and full details are now available at waltonemc.com/youth.

High school sophomores or juniors who live or attend school within Walton EMC's service area are eligible to apply for the all-expense-paid trip to Washington, D.C. Four delegates will be selected for the leadership experience that includes learning more about how our state and national governments work, meeting with Georgia's congressional delegates and visiting national monuments.

All applicants will take a written test on provided materials covering topics such as electricity and cooperatives. To accommodate students' busy schedules, drop-in testing will be offered on two days, Feb. 5 and 13, at the co-op's Monroe office. The 10 students earning the highest scores will participate in finalist interviews beginning Feb. 26. We expect to announce winners on March 1.



Answered by **Jennifer Broun**

Walton EMC's community and youth coordinator



LIGHTNING STRIKE

CO-OP MEMBER SHARES HIS EV STORY

Duke Gibbs has no idea how much gas costs these days. Since the Oconee County businessman began driving an all-electric Ford F150 Lightning pickup, "fueling up" means plugging in for a charge.

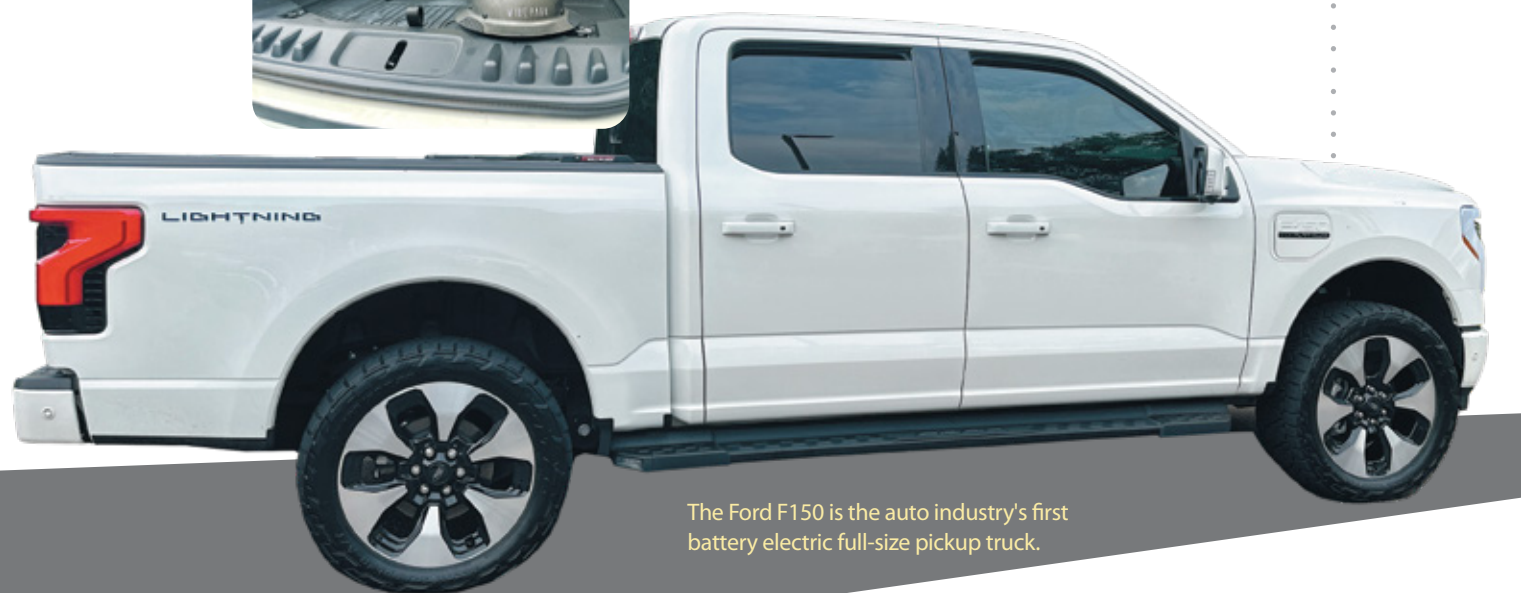
Gibbs, a longtime F150 driver, purchased the EV model in October 2022 — mostly because he was intrigued by the novelty of owning one of the auto industry's first battery electric full-size pickup trucks. Over time, though, he's found several reasons to appreciate his EV.

PROS

Driving a battery-powered vehicle saves Gibbs precious minutes. "I love not having to waste time pumping gas," he said. He estimates saving a minimum of 20 minutes weekly — or more than two full workdays each year — just by avoiding gas stations.

The Walton EMC customer-owner has crunched the numbers on fuel costs, too. Assuming gas costs \$3 per gallon, he estimates fuel for a regular F150 is about 28 cents per mile. His EV goes the same distance on 2 cents of electricity.

He's also calculated return on investment. With a \$7,500 federal tax credit, lower fuel costs and minimal maintenance expenses, he predicts a two-year payback on the purchase price difference between electric and gas F150s.



The Ford F150 is the auto industry's first battery electric full-size pickup truck.

Beyond the numbers, Gibbs likes the Lightning's acceleration capabilities. "When you push the accelerator, it really goes," he said. "It's made driving fun again."

CONS

The Lightning's 300-mile battery range is limiting at times. A second, gas-fueled car is needed for taking long road trips, Gibbs said.

The home charging equipment that came with the Lightning replenishes the battery at a rate of 30 miles per hour. Gibbs must allow an average eight hours for a full recharge.

The vehicle's battery range is cut in half when Gibbs uses it to tow his boat to an area lake. "The truck's towing power is awesome, but you have to recharge much sooner," he said.

Though it's rarely a concern for Gibbs, recharging while on the go can be a challenge, he said. Public charging stations with a fast charger aren't yet widely available.

For his part, Gibbs is installing EV charging stations at some of his properties. Wire Park, a mixed-use project he's developing in Watkinsville, offers six hookups with infrastructure to expand with demand.



Duke Gibbs, Walton EMC Member and EV Owner

PORTABLE GFCI: A bright idea for holiday lighting

Millions of Americans will celebrate the start of the holiday season by festooning lawns, porches and rooftops with twinkling lights. If you're among them, remember to make safety a priority before flipping the power switch.

"Outdoor electric lights and decorations should always be plugged into outlets protected by ground fault circuit interrupters, or GFCIs," said Brad Adcock, Walton EMC's director of safety and training.

GFCIs turn off the power when a ground fault is present, helping protect users from electrical burns, shock or electrocution. They are commonly used in temporary power applications, such as holiday yard decorations, to provide protection where electrical circuits may contact water, and a standard GFCI receptacle is not available.

Though standard in newer homes, older houses typically aren't equipped with GFCI-protected outdoor outlets. You'll recognize these outlets easily because they have test and reset buttons.

Portable GFCI devices, available at home improvement stores, are a solution for homes lacking GFCI-protected outdoor outlets. Plug-in GFCIs connect directly into a wall outlet and have one or more receptacles. Inline GFCIs are lengths of cord with an outlet plug at one end and one or more receptacles at the other end.



Light up safely, then share photos of your festive yard decorations with us on Facebook.



Save the Date!

Walton EMC Holiday Programs

November 2 • 7pm
Oconee Civic Center

November 14 • 7pm
Rock Gym in Loganville

Get ready to celebrate the season with some exciting holiday fun! More details coming soon. Stay tuned to our social media for updates.

